

PEEP SIGHTS

PSLT & PSHT SERIES

FEATURES

PSLT series:

- Body: brass
- Glass: pirex
- Max. operating temperature: 120 °C

PSHT series:

- Body: AVP
- Glass: pirex
- Max. operating temperature: 480 °C
- Max. operating pressure: 3.5 bar



E5711102

APPLICATIONS

- Flame control on all burners.
- Strategic position where visual flame control is necessary.

DESCRIPTION

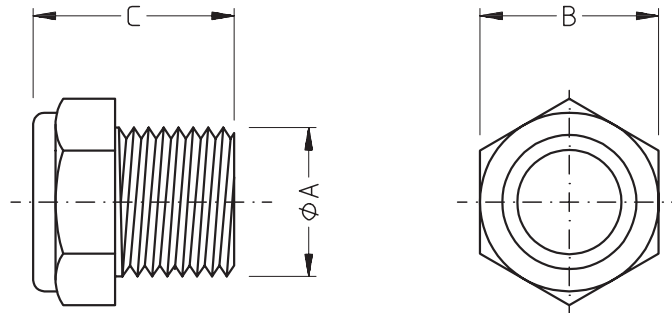
Peep sights, both PSLT and PSHT series, allow for visual flame control on all burners. Two models are available: PSLT low temperature peep sight, and PSHT high temperature peep sight. Low temperature peep sights are of one piece brass construction and incorporate 3 mm thick pirex glass window, two gaskets in fasit-oil (no asbestos) and one in EPDM which guarantee perfect sealing. Recommended for use in temperature ranges not exceeding 120° C. Low temperature peep sights are available in sizes from 3/8" to 2".

PSHT high temperature peep sights are AVP construction with pirex glass and high temperature gaskets in fasit-oil (no asbestos). Each unit has a 1/4" NPT tapping for cooling air connection. Glass, body and gasketing designed for 3.5 bar pressure. Max. temperature at sight port 480 °C. They are available in pipe sizes of 3/4" and 2".



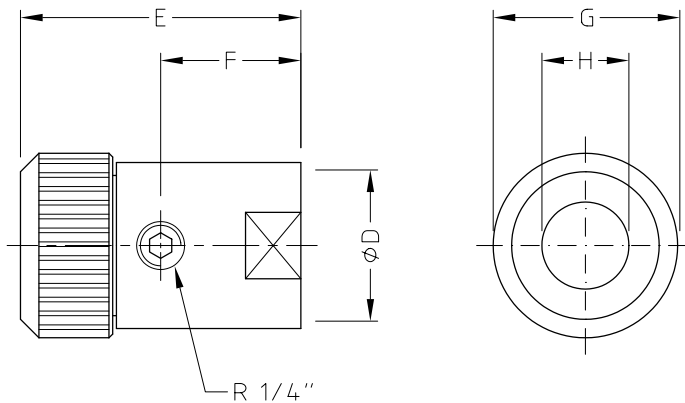
E5711101

DIMENSIONS



Catalog no.	ø A	B	C	ø Port
3 PSLT	G - 3/8"	20	24	11
4 PSLT	G - 1/2"	24	20	14
6 PSLT	G - 3/4"	30	28	19
8 PSLT	G - 1"	38	29	22
10 PSLT	G - 1.1/4"	55	31.5	31
12 PSLT	G - 1.1/2"	55	32.5	36

D5711101



Catalog no.	ø D	E	F	ø G	ø H	ø Port
6 PSHT	G - 3/4"	92	45	50	22	20
8 PSHT	G - 1"	92	45	50	22	20
10 PSHT	G - 1.1/4"	92	45	55	22	20
12 PSHT	G - 1.1/2"	90	45	70	37	36
16 PSHT	G - 2"	90	45	70	37	36

D5711102